

**Penfolds,
Property People.**

Durbans Road, Wisborough Green.
£625,000 Freehold



Penfolds, Specification.

For lovers of Victorian architecture, this charming semi-detached cottage, in the sought after village of Wisborough Green, combines a harmonious blend of classic features, modern comfort, and timeless charm. The kitchen/breakfast room opens out to the garden with uninterrupted views over fields whilst the remaining rooms on the ground floor provide versatile spaces for dining, relaxation, sleeping, and working! The village offers a strong sense of community with a primary school, church, pubs and numerous clubs and societies to take part in.

- Pretty Victorian semi-detached house
- Views over open fields
- Four bedrooms
- Versatile ground floor layout
- Ground floor bedroom & bathroom
- Utility room
- Oil fired central heating
- Mains water, electricity and drainage
- Garage and private parking
- EPC: F Chichester District Council Tax Band: E





"October Cottage has been such a great house, with loads of bright, characterful living space which has been perfect for our growing family. It's so convenient for all the village has to offer as well as plenty of countryside walks nearby."

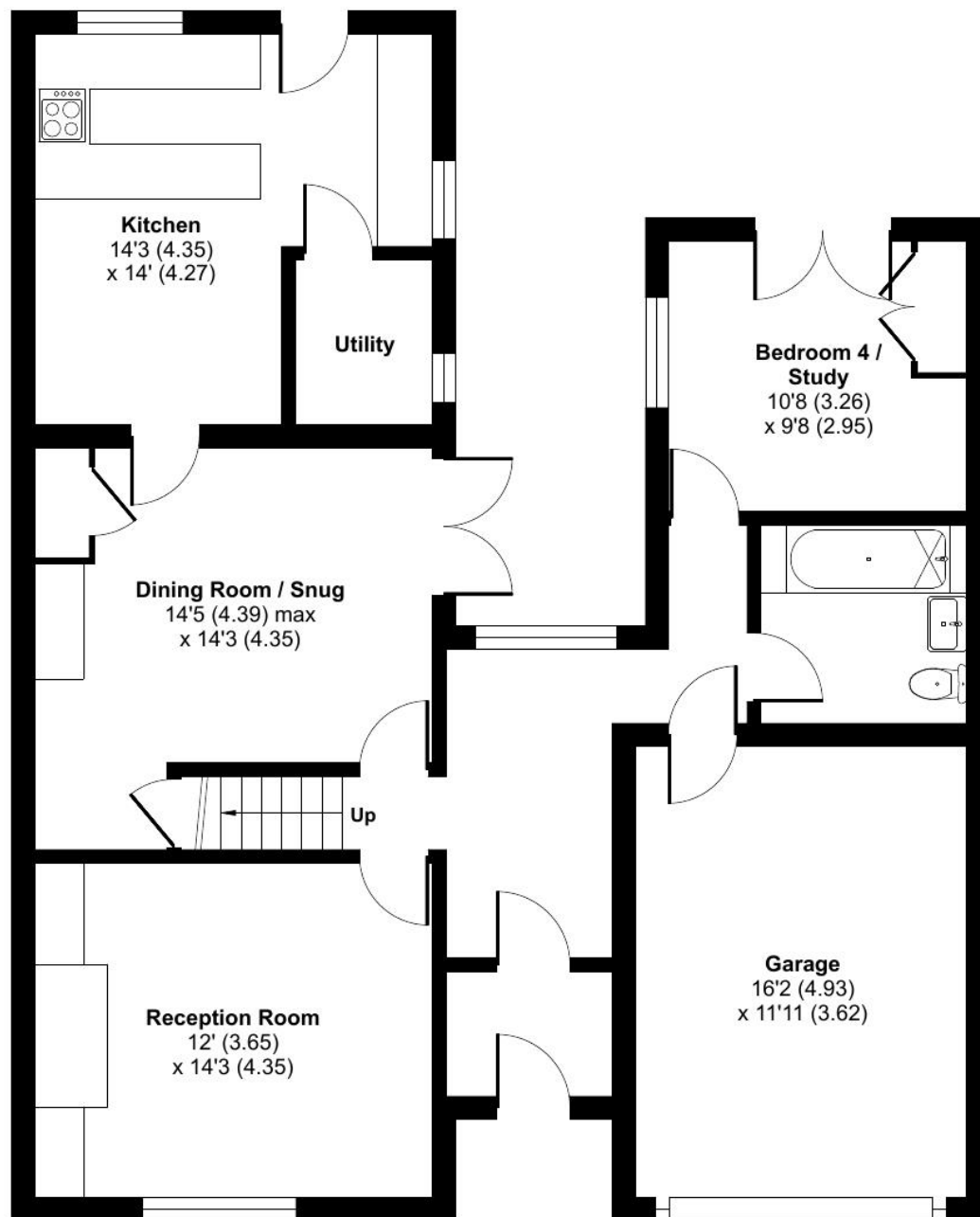
The owner

01403 289414

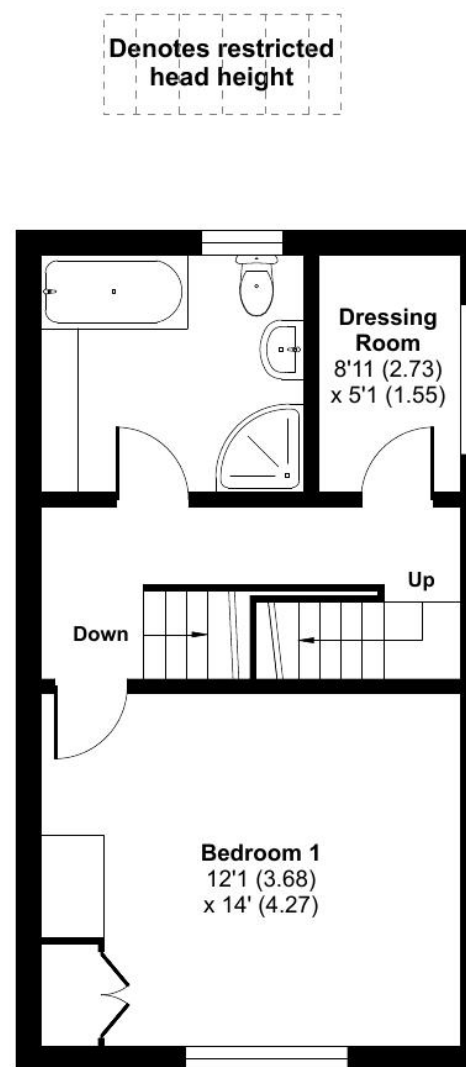
enquiries@penfoldsestateagents.co.uk

Approximate Area = 1560 sq ft / 144.9 sq m
 Limited Use Area(s) = 28 sq ft / 2.6 sq m
 Garage = 192 sq ft / 17.8 sq m
 Total = 1780 sq ft / 165.3 sq m

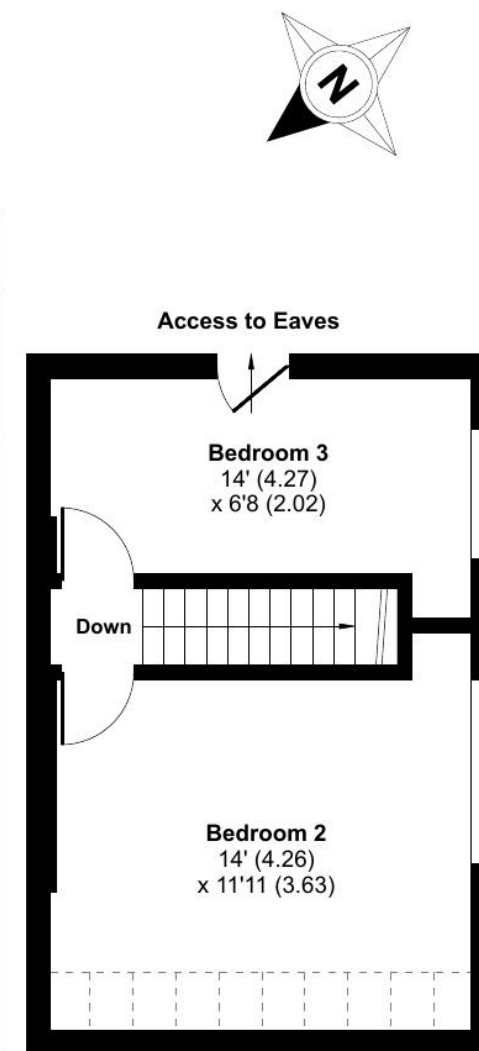
For identification only - Not to scale



GROUND FLOOR



FIRST FLOOR



SECOND FLOOR

Denotes restricted head height

