

**Penfolds,
Property People.**

Fittleworth Road, Wisborough Green.

£800,000 Freehold

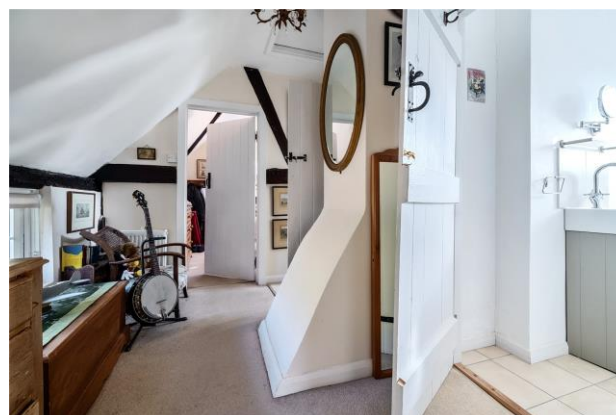


Penfolds, Specification.

Nestled in an idyllic lakeside setting, this charming period cottage offers the perfect blend of character, comfort, and tranquility. A private driveway leads you to the doorstep of this beautifully updated home, where you'll be welcomed by the cozy ambiance of its thoughtfully restored interiors. The sitting room, complete with a log burner, provides the ideal space to unwind. The eat-in kitchen is a heartwarming space, perfect for family meals and gatherings. Period features throughout, including exposed beams highlight the home's timeless charm. Stepping outside, you'll find a serene decking area by the lakeside, offering an enchanting spot for al fresco dining or simply soaking in the peaceful surroundings. The cottage is set within delightful gardens and lawned areas. Open garaging and plenty of storage ensure convenience and practicality.

- Pretty period, lakeside cottage in idyllic rural setting
- Two bedrooms & bathroom
- EPC: E Chichester Council Tax Band: D
- Private driveway with oak framed car barn & storage
- Outbuilding currently used as a store
- Sitting room with log burner
- Conservatory
- Utility & ground floor shower room
- Private drainage
- Oil fired central heating, mains water & electricity





"Our unique cottage exudes character and warmth. The jetty is an ideal spot for a glass of wine in the evening listening to birdsong and watching the ducks glide by"

The owner

01403 289414

enquiries@penfoldsestateagents.co.uk

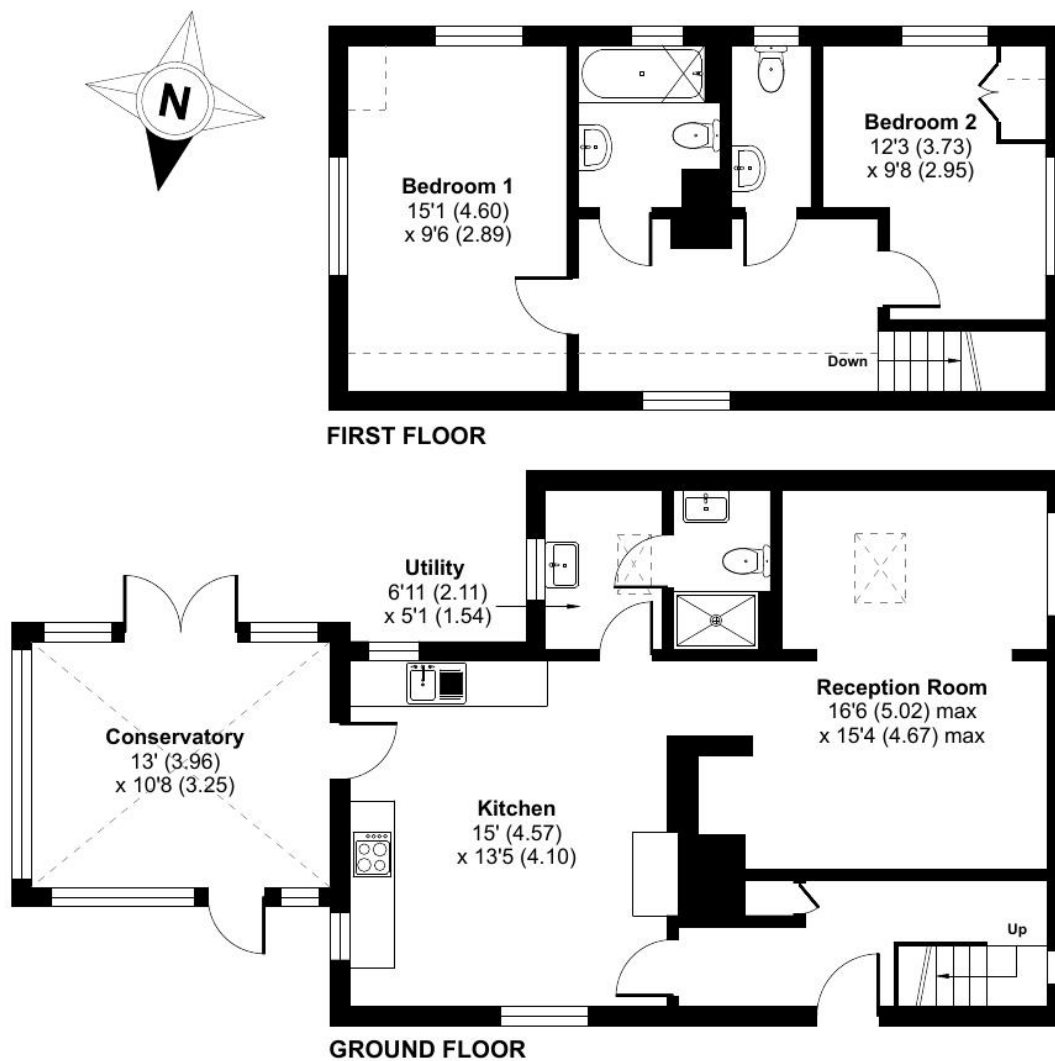
Approximate Area = 1169 sq ft / 108.6 sq m (excludes carport)

Limited Use Area(s) = 46 sq ft / 4.2 sq m

Outbuilding = 505 sq ft / 46.9 sq m

Total = 1720 sq ft / 159.7 sq m

For identification only - Not to scale



Denotes restricted
head height

9'10 (3.00)
x 5'7 (1.70)

OUTBUILDING 3

Store
15'7 (4.74)
x 14'11 (4.55)

OUTBUILDING 1

Store
12'6 (3.80)
x 12'4 (3.76)

Carport
18'6 (5.68)
x 17' (5.18)

OUTBUILDING 2

Log Store
17' (5.18)
x 3'9 (1.15)

