

**Penfolds,  
Property People.**

**Heathermead, West Chilton.**  
£1,350,000 Freehold



# Penfolds, Specification.

Nestled at the end of a cul de sac of just seven houses in the highly sought-after village of West Chiltington, this superb family home is a real hidden gem. From the moment you walk through the front door, the style and design of the house are immediately apparent. The striking vaulted hall sets the tone for the rest of the property, showcasing the space and elegance that flows throughout. Offering an abundance of space and storage, this home provides numerous areas for both family gatherings and quiet retreats. Whether you're hosting a dinner party or enjoying a cozy evening with loved ones, there's room for everyone to feel at home. The attractive gardens are beautifully designed to offer privacy with minimal upkeep required. A triple, integral garage provides ample space for vehicles, storage, or even a workshop. With so much room and so many thoughtful touches, this property combines luxury, convenience, and practicality in equal measure.

- Detached family home in sought after village location
- Five bedrooms, three bathrooms
- Four reception rooms
- Utility room
- Cloakroom
- Low maintenance & secluded landscaped gardens
- EPC: C Horsham District Council Tax Band: G
- Mains gas, water, electricity & drainage
- Integral triple garage and private parking
- Private road





"From watching Heathermead rise from the bare ground many years ago, we have loved every minute of being here. The house is warm, comfortable and easy to live in and the neighbours most supportive, friendly and welcoming. Nearby towns and villages offer all amenities necessary for a pleasurable life. Walks around the nearby lanes, the woods and the golf course are a delight."

The owner

**01403 289414**

[enquiries@penfoldsestateagents.co.uk](mailto:enquiries@penfoldsestateagents.co.uk)

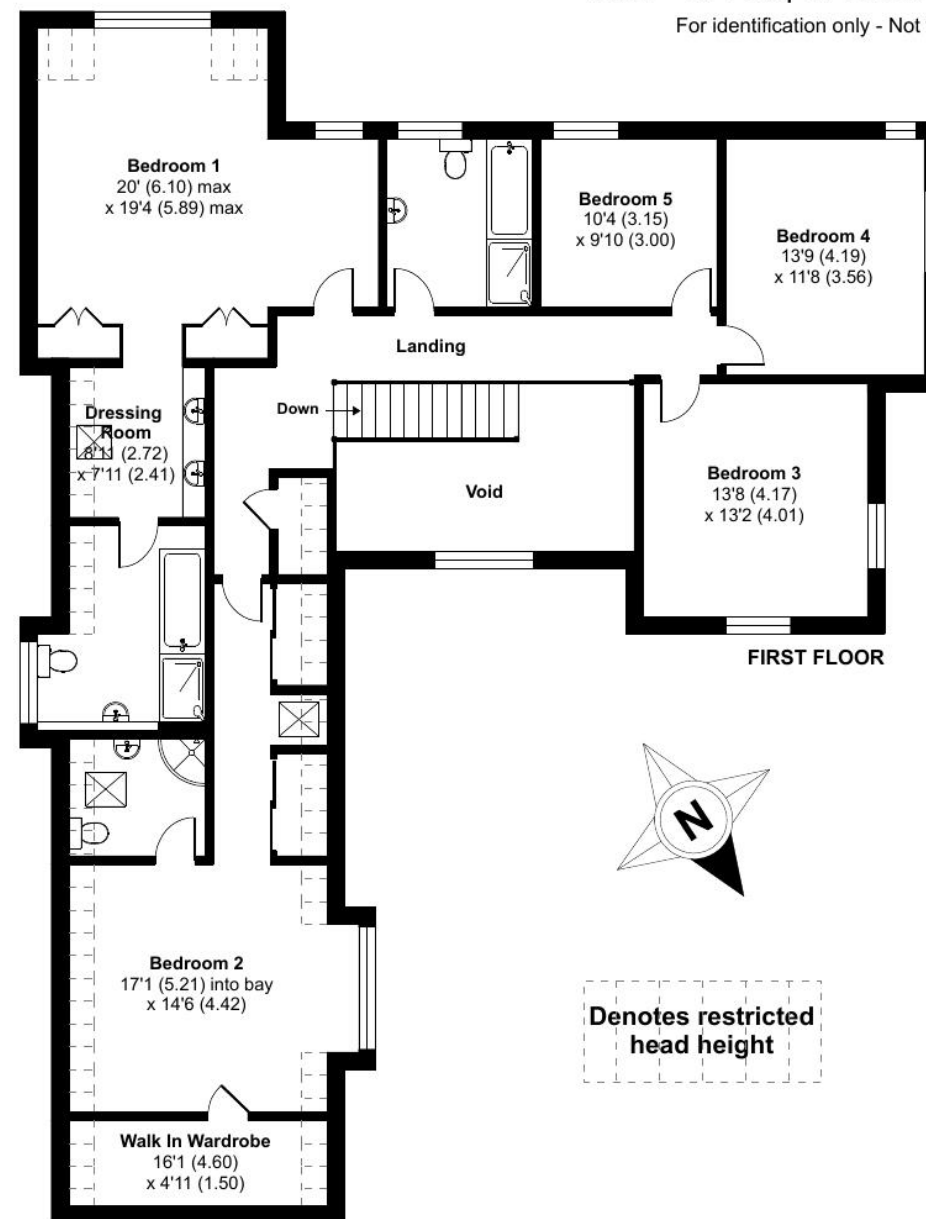
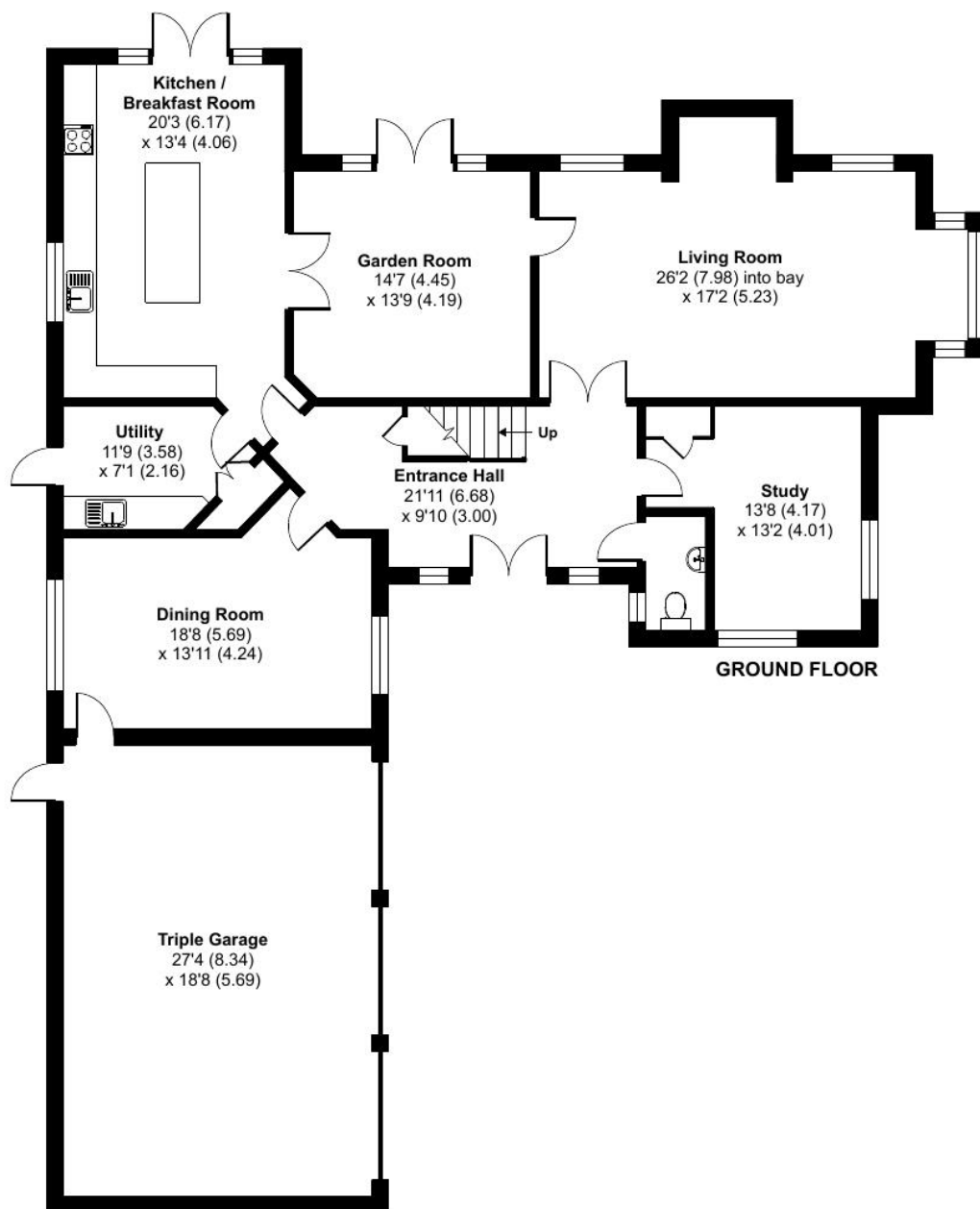
Approximate Area = 3254 sq ft / 302.3 sq m (excludes void)

Limited Use Area(s) = 142 sq ft / 13.2 sq m

Triple Garage = 518 sq ft / 48.1 sq m

Total = 3914 sq ft / 363.6 sq m

For identification only - Not to scale



Denotes restricted head height

