

**Penfolds,
Property People.**

Songhurst Meadow, Wisborough Green.
45% Share - £202,500 Leasehold



Penfolds, Specification.

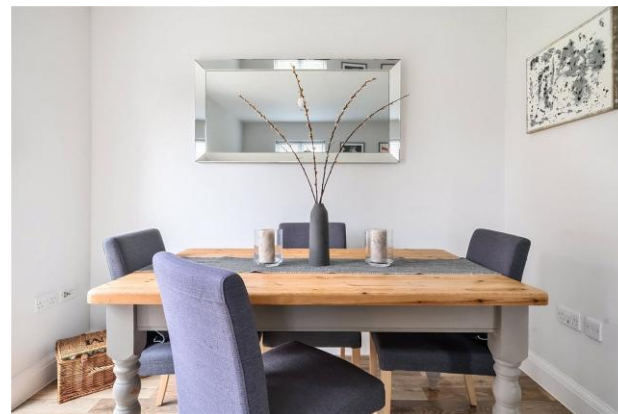
SHARED OWNERSHIP

Eligibility criteria applies under the Shared Ownership scheme.

Built in 2021 by the highly regarded Runnymede Homes, this two-bedroom house showcases exceptional attention to detail and high-quality fittings, reflecting their commitment to excellence. Nestled in a sought after area of the village, you'll be just a short stroll away from everything Wisborough Green has to offer—local shops, the post office, charming pubs, a café, a hairdresser, the church, and primary school. The contemporary design features two spacious double bedrooms and bathroom. The separate kitchen is perfect for cooking enthusiasts, while the generous living room, with its doors opening into the garden, creates a seamless connection to outdoor living.

- 45% Share available for sale - Eligibility criteria applies under the Shared Ownership scheme.
- Leasehold - 250 years from 20th July 2021
- Service charge: Currently £24.58 per month
- Management fee: Currently £31.17 per month
- Current Buildings Insurance: £16.64 per month
- Rent - £590.64 per month
- LPG Gas central heating, metered to house. Mains water, electricity & drainage
- Private garden and allocated parking for two cars
- EPC: C Chichester District Council Tax Band: C
- 7 years remaining of Advantage Build Warranty





"We've loved every moment at Songhurst Meadow, from family get-togethers to peaceful walks in the beautiful countryside. This home has been a place of comfort and calm for us, and the friendly community has made it even better. We're sure the next owners will enjoy it here as much as we have"

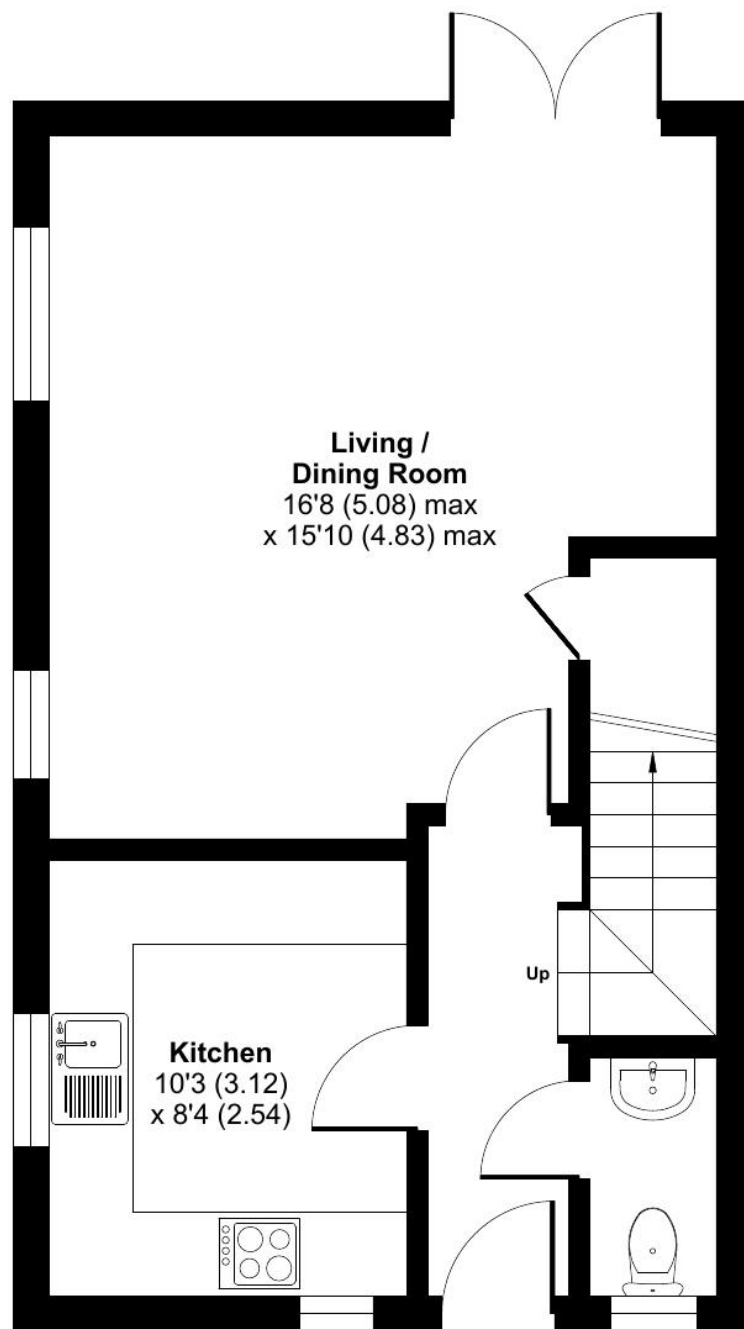
The owner

01403 289414

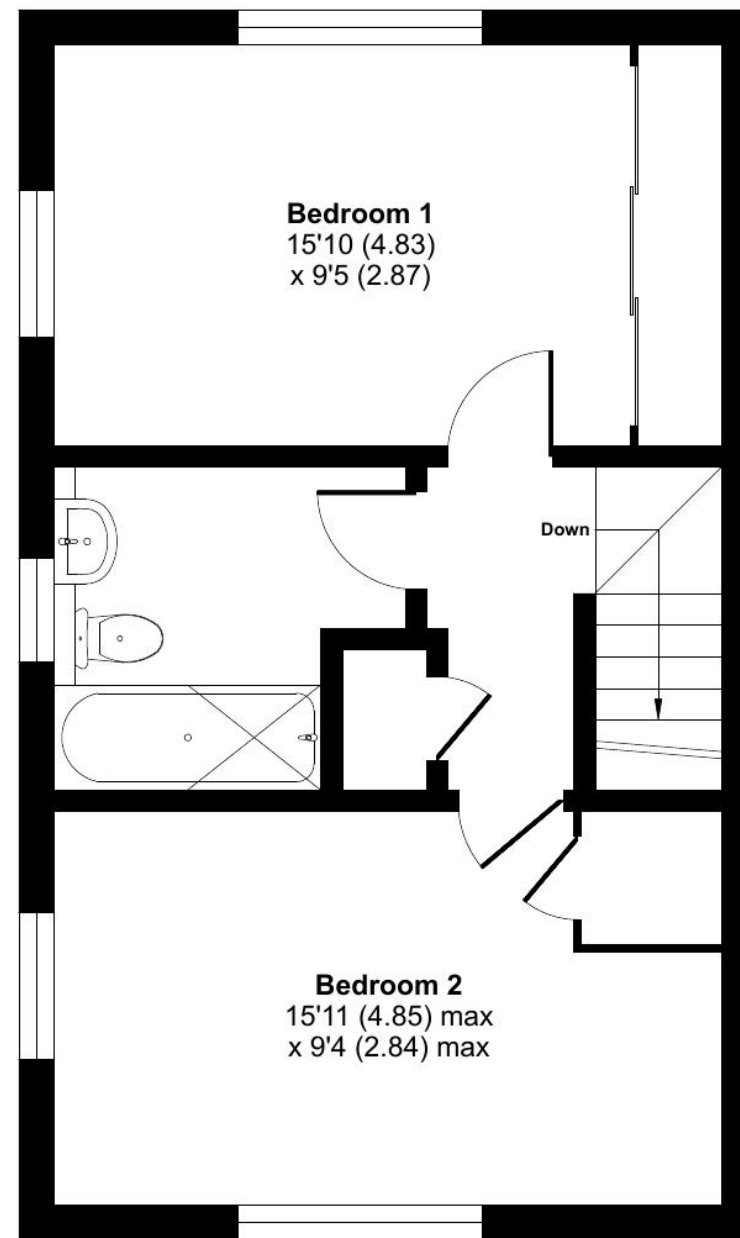
enquiries@penfoldsestateagents.co.uk

Approximate Area = 732 sq ft / 68 sq m

For identification only - Not to scale



GROUND FLOOR



FIRST FLOOR

